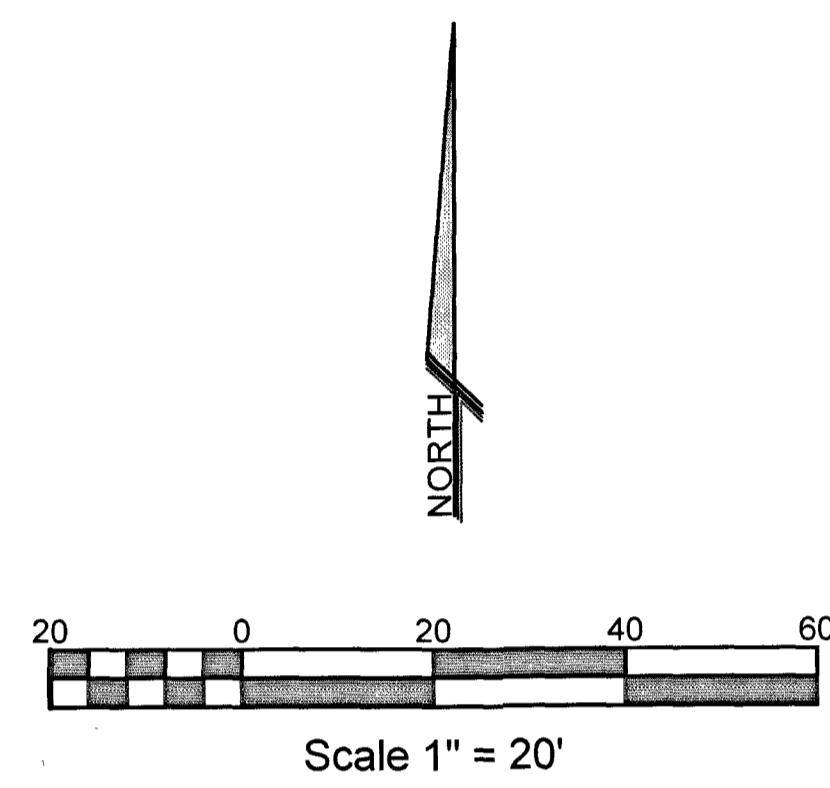
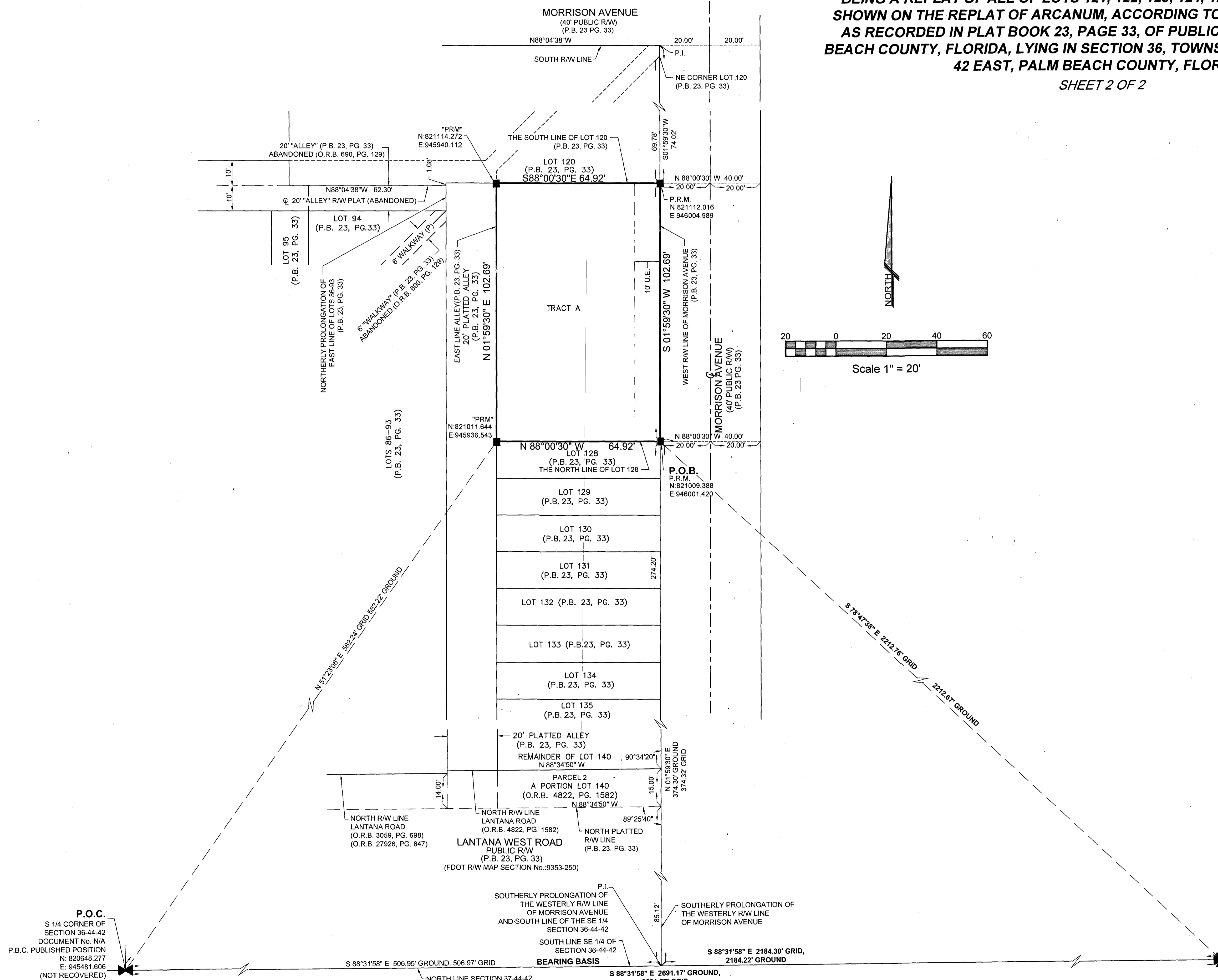


ARCANUM PLUS

BEING A REPLAT OF ALL OF LOTS 121, 122, 123, 124, 125, 126, AND 127, AS SHOWN ON THE REPLAT OF ARCANUM, ACCORDING TO THE PLAT THEREOF, AS RECORDED IN PLAT BOOK 23, PAGE 33, OF PUBLIC RECORDS OF PALM BEACH COUNTY, FLORIDA, LYING IN SECTION 36, TOWNSHIP 44 SOUTH, RANGE 42 EAST, PALM BEACH COUNTY, FLORIDA.

SHEET 2 OF 2



NOTES ON COORDINATES AND DISTANCES
 COORDINATES SHOWN HEREON ARE FLORIDA STATE PLANE GRID
 DATUM = NAD83 2007 ADJUSTMENT
 ZONE = FLORIDA EAST
 LINEAR UNITS = US SURVEY FEET
 COORDINATE SYSTEM = 1983 STATE PLANE
 PROJECTION - TRANSVERSE MERCATOR
 ALL DISTANCES ARE GROUND UNLESS OTHERWISE NOTED
 SCALE FACTOR: 1.000037471486
 GROUND DISTANCE X SCALE FACTOR = GRID DISTANCE
 PLAT BEARING = GRID BEARING
 NO ROTATION
 ALL TIES TO SECTION CORNERS AND QUARTER CORNERS ARE GENERATED FROM MEASURED VALUES

P.O.C.
 S 1/4 CORNER OF SECTION 36-44-42
 DOCUMENT NO. N/A
 P.B.C. PUBLISHED POSITION
 N: 820648.277
 E: 945481.606
 (NOT RECOVERED)

SE CORNER OF 36-44-42
 DOCUMENT No. 53381 15866 30253
 P.B.C. PUBLISHED POSITION
 N: 820579.366
 E: 948171.990
 (NOT RECOVERED)

LEGEND:

○ = SET P.C.P., 'P.K.' NAIL & DISC STAMPED "MLS" LB # 6838"	C.M. = CONCRETE MONUMENT (D) = DEED D.B. = DEED BOOK D.E. = DRAINAGE EASEMENT EASE = EASEMENT FDOT = FLORIDA DEPARTMENT OF TRANSPORTATION P.W.S.W.E. = PUBLIC WATER SUPPLY WELL EASEMENT	NAD 83 = NORTH AMERICAN DATUM O.R.B. = OFFICIAL RECORD BOOK P.B. = PLAT BOOK P.C. = POINT OF CURVATURE PG = PAGE P.I. = POINT OF INTERSECTION P.O.B. = POINT OF BEGINNING P.O.C. = POINT OF COMMENCEMENT	P.R.M. = PERMANENT REFERENCE MONUMENT R = RADIUS R/W = RIGHT OF WAY U.E. = UTILITY EASEMENT
--	--	---	--

SCALE: 1" = 20'	MILLER LAND SURVEYING 1121 LAKE AVENUE LAKE WORTH, FLORIDA 33460 PHONE: (561) 586-2669 - FAX: (561) 582-0151 www.millersurveying.com e-mail: orders@millersurveying.com	REF: 14420
DRAWN BY: S.R.L.		PREV. JOB NO'S: Y231004
FIELD WK: L.M.		JOB NO: Y241177
DATE: 12/20/2024		L-2407-C